

Name _____

Period _____

Test 2

1. What is used to measure VOLUME in the **metric** system?

- A. kilometers and meters
- B. milliliters and liters
- C. kilograms and grams
- D. cups and gallons
- E. miles and feet?

2. According to the story of the king's feet, why doesn't most of the world use the English system?

- A. Not everyone has feet
- B. Not everyone has a stick
- C. Not everyone uses measurements
- D. Not everyone likes using the English King's system



3. What is used to measure LENGTH in the **metric** system?

- A. kilometers and meters
- B. milliliters and liters
- C. kilograms and grams
- D. cups and gallons
- E. miles and feet

4. True/False Most Americans commonly use metric lengths. _____

5. What is used to measure MASS in the **metric** system?

- A. kilometers and meters
- B. milliliters and liters
- C. kilograms and grams
- D. cups and gallons
- E. ounces and pounds

6. What unit is used to measure TEMPERATURE in the **metric** system?

7. Match each metric unit with how it was invented.

- | | |
|--|------------|
| A. divided the distance from pole to the equator by 10,000,000 | W. Liter |
| B. calculated the mass for a cubic centimeter of water | X. Meter |
| C. discovered the volume for 1000 cubic centimeters of water | Y. Celsius |
| D. calculated freezing and boiling at sea level | Z. Gram |

8. Two of the most common metric lengths you'll use are meters and millimeters. What are the other two most common metric lengths?

9. Besides grams, what are the two most common units of mass?

10. Besides liters, what are the two most common units of volume?

11. How does most of the world spell meter? _____

12. What is one way to measure length that is not used anymore?

- A. miles
- B. kilometers
- C. yards
- D. cubits
- E. centimeters

13. Fill out the following table:

<u>K</u> _____	<u>H</u> _____	Deca	<u>M</u> _____	<u>D</u> _____	Centi	<u>M</u> _____
----- ----- -----			<u>L</u> _____	----- ----- -----		
----- ----- -----			<u>G</u> _____	----- ----- -----		
_____	_____	10	1	1/_____	1/100	1/_____

14. Do the following conversions:

23457 centimeters to meters _____

39.87 liters to hectoliters _____

305.55 milligrams to grams _____

2.43 kilometers to meters _____

2.43 meters to kilometers _____

15. What weighs about a gram?

- A. a chair
- B. a science book
- C. a piece of paper
- D. you

16. Which of these is about a meter?

- A. the width of your hand
- B. the height up to a doorknob
- C. the length of this room
- D. the width of your little finger

17. Which has a volume of about a liter?

- A. A 1000 mL beaker
- B. A 50 mL flask
- C. A 100 mL cylinder
- D. A 2000 mL bottle

18. Write next to each metric unit its correct abbreviation. Be careful. Don't let the box mess you up.

Liter _____
Meter _____
Gram _____
Centiliter _____
Milligram _____
Kilometer _____

l.	mtr.	cm.	mg.
L.	g.	cg.	Mg.
Lit.	G.	cgrm.	MG.
lit.	Gra.	cltr.	mG.
Ltr.	gra.	CL.	millig.
ltr.	Grm.	mG.	km.
m.	grm.	mg.	KM.
M.	cl.	mm.	kM.
Met.	Cl.	mM.	kL
met.	cL.	mL.	kg.
Mtr.	centi	cgm.	kC.

19. When reading a science textbook, which is LEAST important to read?

- A. Picture captions
- B. Subject headings
- C. Introductory paragraph
- D. Bold words

20. Use your knowledge of Latin and Greek to match the following known words

- | | |
|----------------------|------------------------|
| _____ A. thermometer | P. small sound |
| _____ B. photograph | Q. look inside |
| _____ C. microphone | R. two circles |
| _____ D. endoscope | S. light writing |
| _____ E. bicycle | T. measure temperature |
| _____ F. transport | U. carry across |

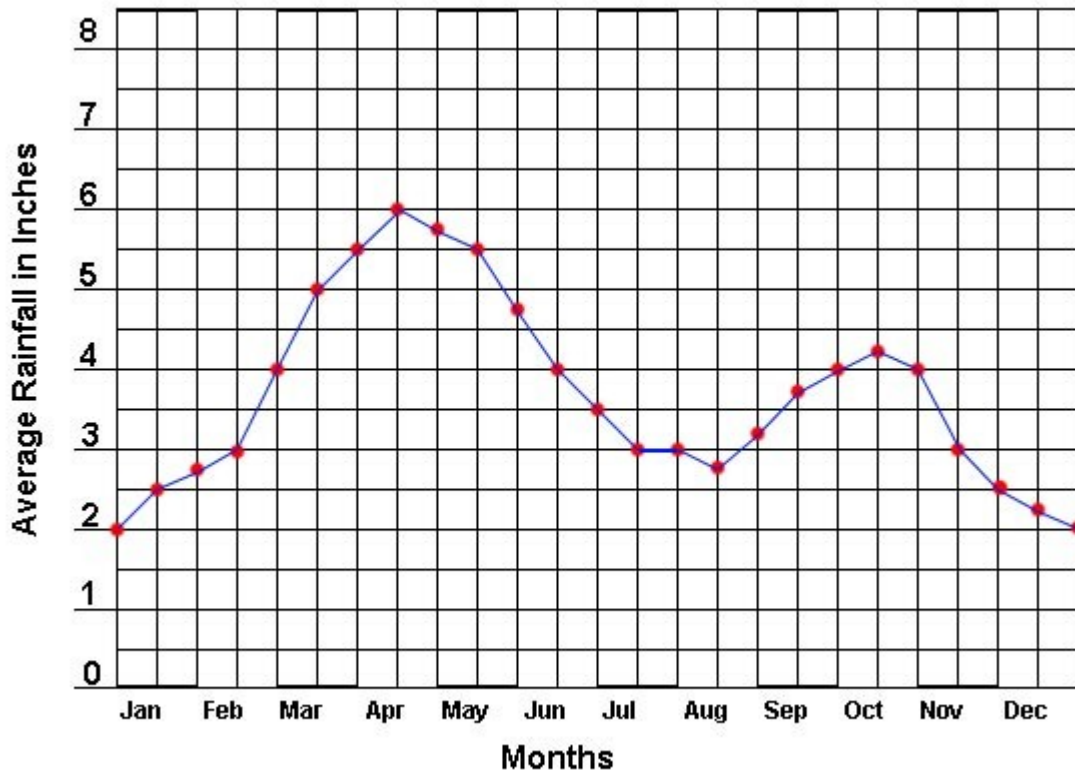
21. Use your knowledge to determine the following fiction words.

- | | |
|---------------------|------------------------|
| _____ A. hypermorph | V. three moon |
| _____ B. triluna | W. super/ above change |
| _____ C. hydrovore | X. know other |
| _____ D. megaterra | Y. water eater |
| _____ E. heterosci | Z. large earth |

22. Why are Greek and Latin used so much in science?

Read the following graph and answer the questions

PRECIPITATION MEASURED EVERY TWO WEEKS



- 23. What does the x-axis represent?
 - A. Average Rainfall in Inches
 - B. Months
 - C. 0-8
 - D. Jan - Dec
 - E. Cannot be determined

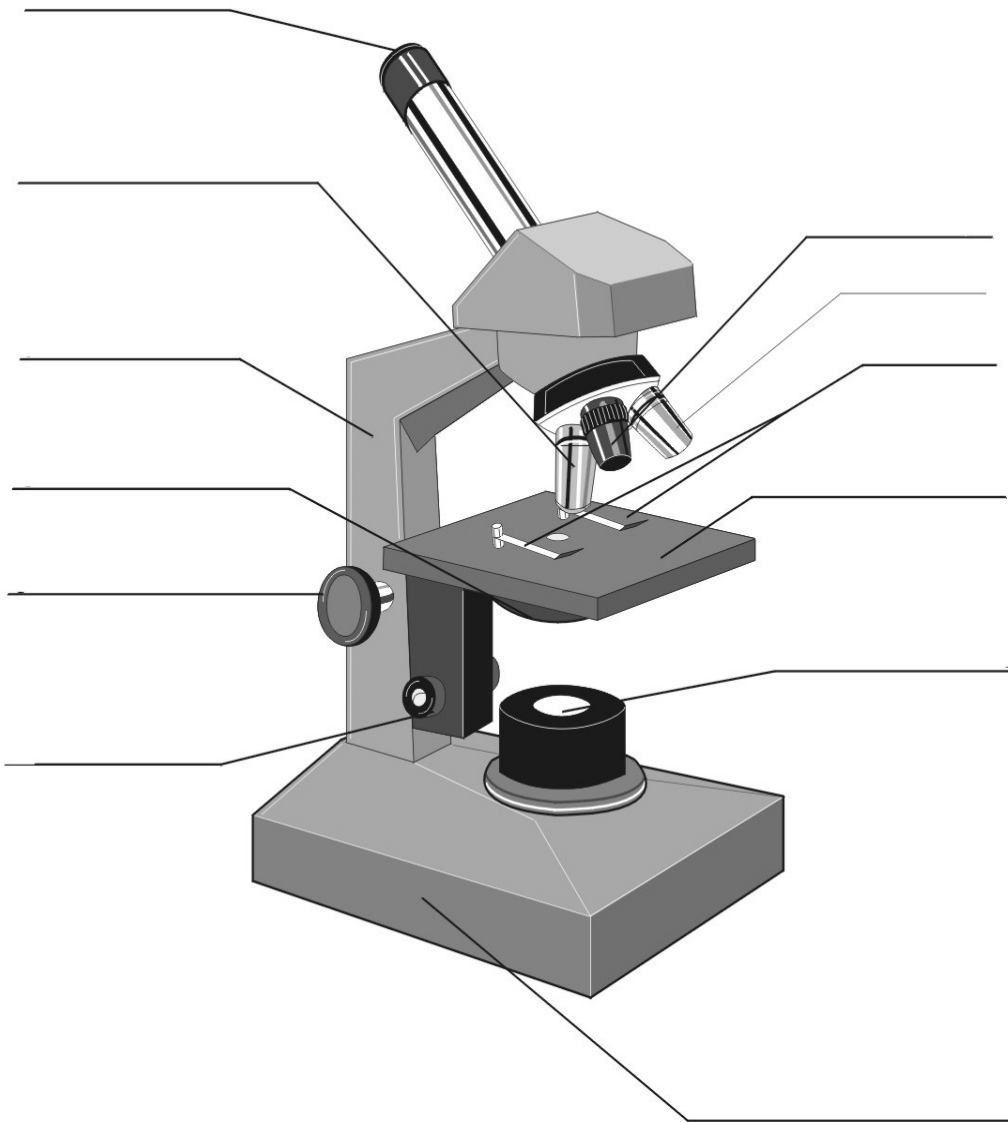
- 24. What does the y-axis represent?
 - A. Average Rainfall in Inches
 - B. Months
 - C. 0-8
 - D. Jan - Dec
 - E. Cannot be determined

- 25. Which season is the driest?
 - A. Spring
 - B. Summer
 - C. Fall
 - D. Winter
 - E. Cannot be determined

- 26. What is the highest amount of rainfall that fell in a single two-week period?

27. Label the microscope using the following words

- arm
- base or foot
- coarse focus
- diaphragm or iris
- eyepiece
- fine focus
- high-power objective lens
- light source
- low-power objective lens
- medium-power objective lens
- stage
- stage clip
- BONUS**
- body
- eyepiece tube
- nosepiece



28. What is the proper way to hold a microscope?

29. What is the proper way to unplug a microscope?

30. Why shouldn't you start focusing on high power?
